

400/M3 pumphead

400/M and N series pumpheads

Features and benefits

- 3 channel compact pump design
- Works with 1.6 mm wall thickness tubing and Luer connectors
- Complete pump with motor, or as pumphead only
- Pumphead available in PVDF for greater chemical compatibility



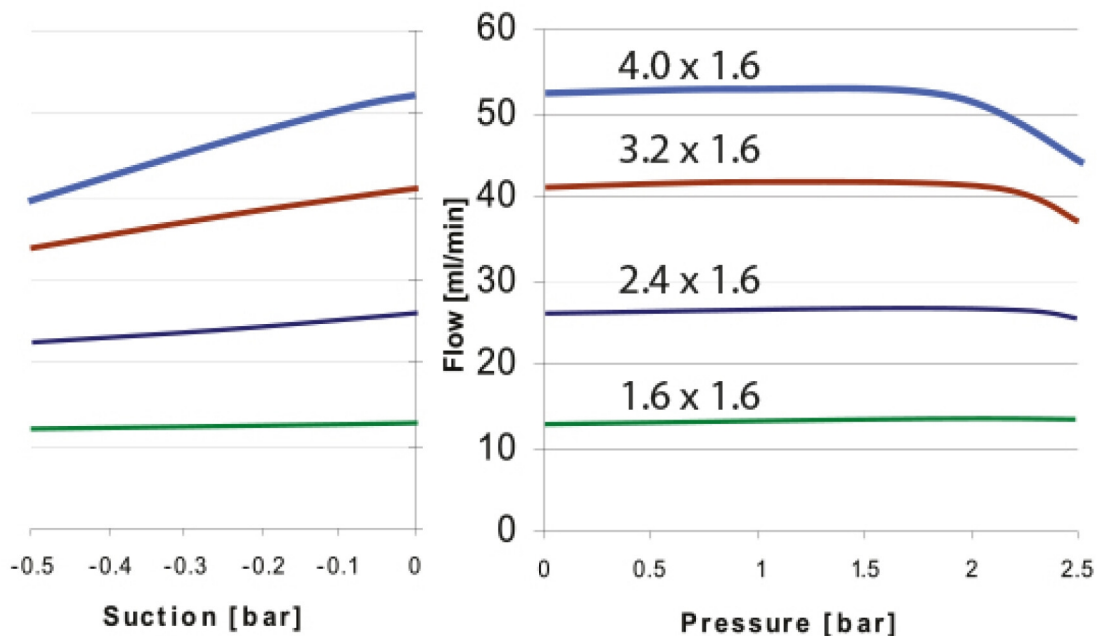
400/M3 pumphead performance

| Flow rates (ml/min) | | |
|---------------------|--------|------------------------------|
| Tube bore (mm) | ml/rev | Max continuous flow (ml/min) |
| 1.6 | 0.13 | 65 |
| 2.4 | 0.26 | 130 |
| 3.2 | 0.41 | 200 |
| 4.0 | 0.52 | 260 |

400/M

Pressure / suction charts

Santoprene tubing @100rpm



Technical specifications

| | 400/M3 pumphead |
|----------------------------------|-----------------------------------|
| Number of channels | 3 |
| Max. flow rate continuous | 260 ml/min |
| Operating temperature | -10 °C to 45 °C (41 °F to 113 °F) |
| Pump type | Panel mount |
| Compatible tubing bore size | 1.6, 2.4, 3.2, 4 mm |
| Compatible tubing wall thickness | 1.6 mm |

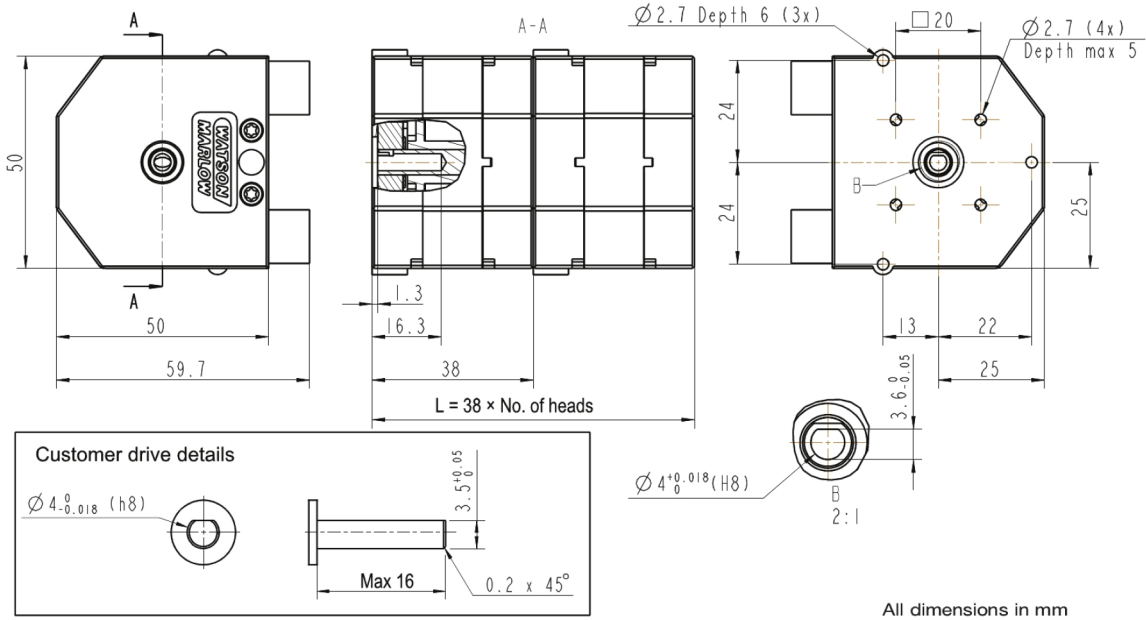
Materials of construction

| | 400/M3 pumphead |
|--------------------------|---------------------------------|
| Pumphead body assembly | Acetal (grey) |
| Pumphead track | Acetal (grey) |
| Pumphead roller assembly | Acetal (black) |
| Pumphead rotor assembly | Acetal (black), Stainless steel |

Information listed covers the complete range.

For detailed specifications of individual models/components refer to user manual or contact WMFTS representative.

400/M3 pumphead dimensions



Product codes

| Channels | Req. torque, bioprene tubing | Req. torque, silicone tubing | Part code standard | Part code PVDF |
|----------|------------------------------|------------------------------|--------------------|----------------|
| 3 | 270mNm | 240mNm | 043.001M.E3C | 043.001M.E3P |

Disclaimer: All flow rates shown were obtained pumping water at 20 °C (68 °F) with zero suction and delivery heads. Watson-Marlow, Pumpsil, PureWeld XL, Bioprene and Marprene are trademarks of Watson-Marlow Limited. Disclaimer: The information contained in this document is believed to be correct but Watson-Marlow Limited accepts no liability for any errors it contains, and reserves the right to alter specifications without notice. GORE and STA-PURE are trademarks of W. L. Gore & Associates. Please state the product code when ordering pumps and tubing.



wmfts.com/global
10 July 2025