

400/M2 pumphead

400/M and N series pumpheads

Features and benefits

- 2 channel compact pump design
- Works with 1.6 mm wall thickness tubing and Luer connectors
- Complete pump with motor, or as pumphead only
- Pumphead available in PVDF for greater chemical compatibility



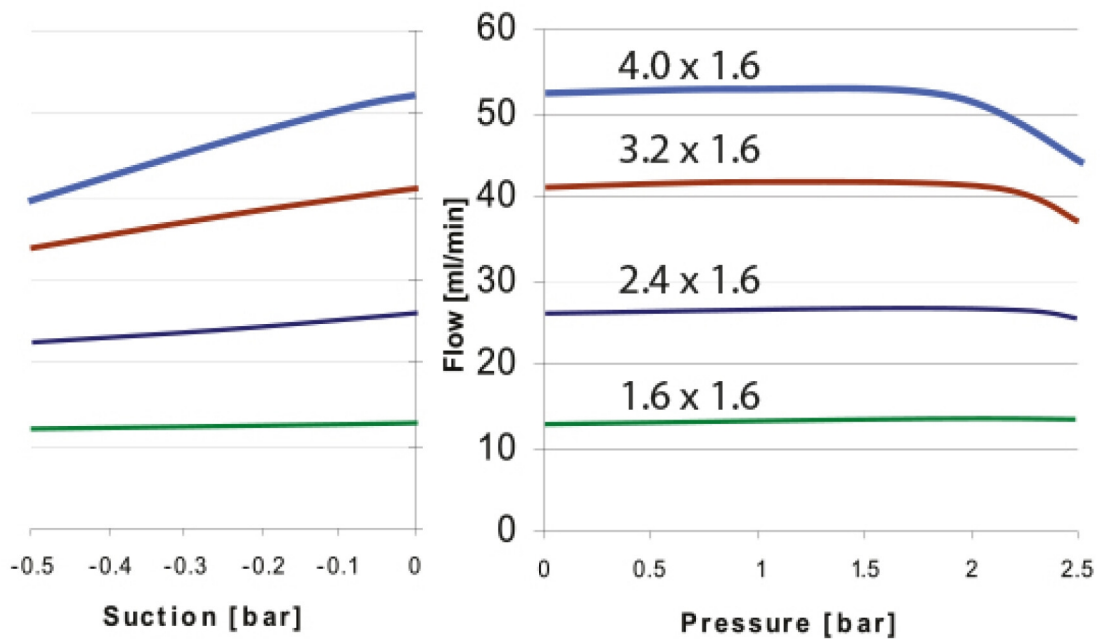
400/M2 pumphead performance

Flow rates (ml/min)		
Tube bore (mm)	ml/rev	Max continuous flow (ml/min)
1.6	0.13	65
2.4	0.26	130
3.2	0.41	200
4.0	0.52	260

400/M

Pressure / suction charts

Santoprene tubing @100rpm



Technical specifications

	400/M2 pumphead
Number of channels	2
Max. flow rate continuous	260 ml/min
Operating temperature	-10 °C to 45 °C (41 °F to 113 °F)
Pump type	Panel mount
Compatible tubing bore size	1.6, 2.4, 3.2, 4 mm
Compatible tubing wall thickness	1.6 mm

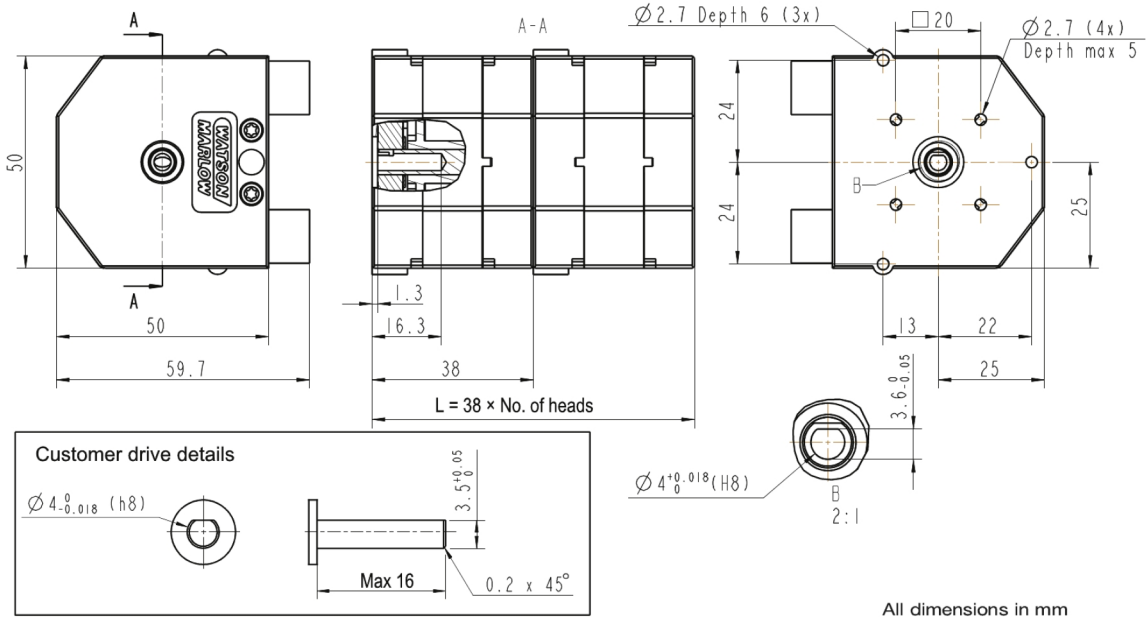
Materials of construction

	400/M2 pumphead
Pumphead body assembly	Acetal (grey), PVDF
Pumphead track	Acetal (grey), PVDF
Pumphead roller assembly	Acetal (black), PVDF
Pumphead rotor assembly	Acetal (black), PVDF, Stainless steel

Information listed covers the complete range.

For detailed specifications of individual models/components refer to user manual or contact WMFTS representative.

400/M2 pumphead dimensions



Product codes

Channels	Req. torque, bioprene tubing	Req. torque, silicone tubing	Part code standard	Part code PVDF
2	270mNm	240mNm	043.001M.E2C	043.001M.E2P

Disclaimer: All flow rates shown were obtained pumping water at 20 °C (68 °F) with zero suction and delivery heads. Watson-Marlow, Pumpsil, PureWeld XL, Bioprene and Marprene are trademarks of Watson-Marlow Limited. Disclaimer: The information contained in this document is believed to be correct but Watson-Marlow Limited accepts no liability for any errors it contains, and reserves the right to alter specifications without notice. GORE and STA-PURE are trademarks of W. L. Gore & Associates. Please state the product code when ordering pumps and tubing.



wmfts.com/global
10 July 2025