

# 621DF with 620RE4A (ATEX) pumphead



600 series close-coupled pumps

## Features and benefits

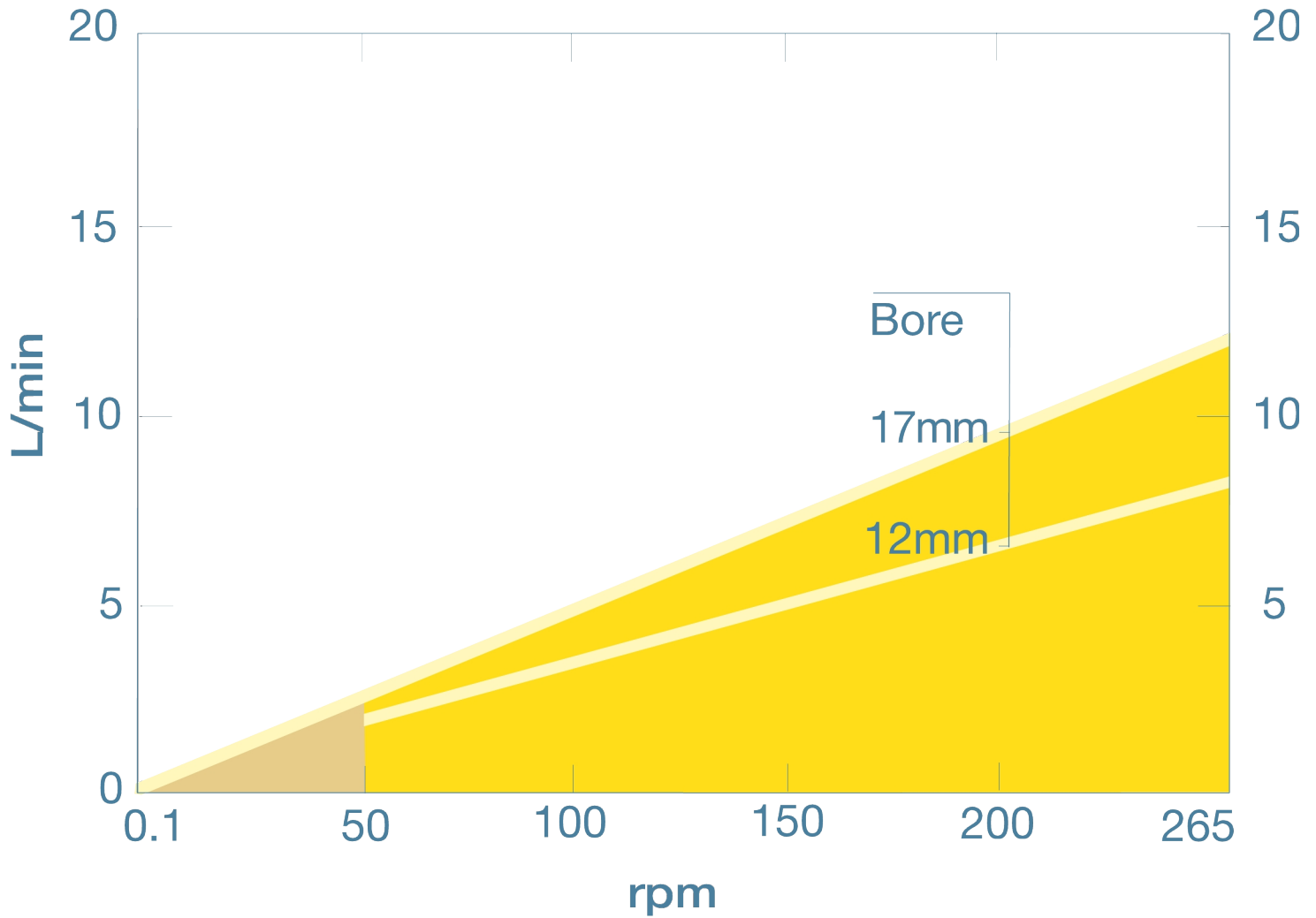
- Simplex flow rates up to 12 L/min
- Discharge pressures up to 4 bar with element style pumpheads
- 620REA two roller or 620RE4A four roller pumphead with CIP/SIP rotor and rapid snap-fit tube loading, pumphead accepts both 12 mm and 17 mm industrial and sanitary LoadSure elements
- Compact design with foot mounted gearbox
- 24-hour continuous duty with a two-year warranty
- Reversible operation
- Fixed Speed options: 230/400 VAC, 60 Hz 3-phase. Inverters available for use outside the ATEX zone. Mechanical ball variator versions available for variable speed within the ATEX zone



## 621DF with 620RE4A (ATEX) pumphead performance

Tube bore and flow rates (L/min)		Elements							
Material	rpm	620RA continuous tubing				620REA Loadsure		620RE4A Loadsure	
		6.4mm	9.6mm	12.7mm	15.9mm	12.0mm	17.0mm	12.0mm	17.0mm
Marpene, Bioprene TM	79/245					2.9-9.1	4.7-14	2.5-7.7	3.3-10
Marpene, Bioprene TL	79/245	1.0-3.2	2.0-6.1	3.2-9.8	4.3-11	2.9-9.1	5.3-16	2.5-7.7	3.7-12
Pumpsil, Neoprene, STA-PURE PCS	79/245	0.95-2.9	2.1-6.6	3.3-10	4.9-14	3.1-9.5	4.8-15	2.6-8.1	3.4-10
STA-PURE PFL	79/245	0.95-2.9	2.0-6.1	3.2-9.8	4.8-15	3.1-9.8	5.7-18	2.7-8.3	4.0-12

## 620RE4A performance graph



### Technical specifications

	621DF with 620RE4A (ATEX) pumphead
Flow rate range	2.5 L/min to 12 L/min
Max. operating pressure ranges	4 bar (60 psi)
Motor types	Fixed speed motor
Standards	ATEX 2014/34/EU, ATEX II 2G Ex h IIB T4 Gb X, CE
Ingress Protection	IP55
Noise	<70dB(A) at 1m
Weight ranges	26 kg (57 lbs)
Power supply	230/400 V 3 ph, 50 Hz

Table lists details for fixed speed pumps. For more detail on drive, AC motor and inverter options please contact your local Watson-Marlow Fluid Technology Solutions representative.

### Materials of construction

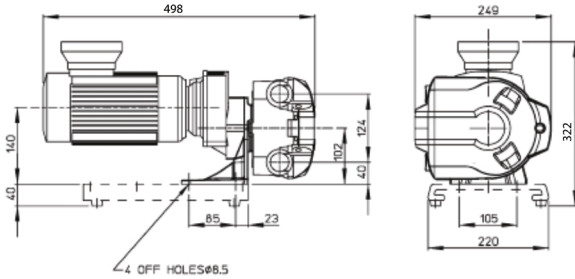
	621DF with 620RE4A (ATEX) pumphead
Gearbox	Aluminium, Cast iron
Motor	Cast iron
Pumphead rotor assembly	PPS/10% stainless steel strands
Seals	Neoprene
Tube clamp assembly	PP (polypropylene)

Information listed covers the complete range of fixed speed pumps.

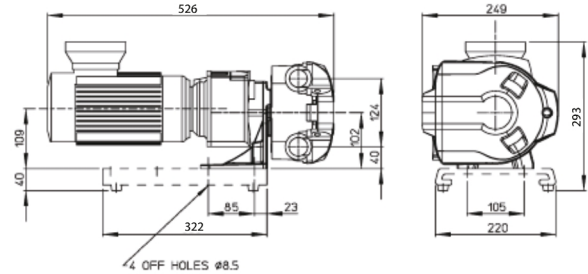
For detailed specifications of individual models/components and other drive/pumphead options, refer to user manual or contact WMFTS representative.

## 621DF with 620RE4A (ATEX) pumphead dimensions

245 rpm model



79 rpm model



## Product codes

Pump	rpm	Supply	Product code
621DF/RE4A ATEX fixed speed PTC's	79	230/400V 50Hz 3ph 0.37kW	060.8622.E40 - *10:1
	245	230/400V 50Hz 3ph 0.37kW	060.8652.E40 - *10:1

\*10:1 or 5:1 speed reduction available using VFD

\*ATEX pumps 10:1 speed reduction available using VFD from geared units fitted with PTC thermistors

For alternative speeds and motor options contact Watson-Marlow Applications Engineering Department.

Pumphead	Description	Product code
620RE4A (ATEX)	Four roller LoadSure element pumphead for maximum 4bar peak pressure	064.0431.A00

Tubing				
Bore/wall (mm)	Bioprene	Marprene	Platinum Silicone	PureWeld XL
6.4x3.2	933.0064.032	902.0064.032	913.A064.032	
9.6x3.2	933.0096.032	902.0096.032	913.A096.032	942.0096.032
12.7x3.2	933.0127.032	902.0127.032	913.A127.032	942.0127.032
15.9x3.2	933.0159.032	902.0159.032	913.A159.032	
Bore/wall (mm)	STA-PURE	STA-PURE PFL		
6.4x3.2	961.0064.032	966.0064.032		
9.6x3.2	961.0096.032	966.0096.032		
12.7x3.2	961.0127.032	966.0127.032		
15.9x3.2	961.0159.032	966.0159.032		

Loadsure Elements				
Material	12mm Tri-Clamp 3/4" PVDF connectors	17mm Tri-Clamp 3/4" PVDF connectors	12mm C&G with PP 3/4" connectors	17mm C&G with PP 3/4" connectors
Bioprene TL 0-2 bar (peak)	933.0120.PFT	933.0170.PFT		
Bioprene TM 0-4 bar (peak)	933.P120.PFT	933.P170.PFT		
STA-PURE PCS 0-4 bar (peak)	961.0120.PFT	961.0170.PFT		
Pumpsil (0-2 bar peak)	913.A120.PFT	913.A170.PFT		
Marprene TL 0-2 bar (peak)			902.0120.PPC	902.0170.PPC
Marprene TM 0-4 bar (peak)			902.M120.PPC	902.M170.PPC
Pumpsil 0-2 bar (peak)			913.A120.PPC	913.A170.PPC

Disclaimer: All flow rates shown were obtained pumping water at 20 °C (68 °F) with zero suction and delivery heads. Watson-Marlow, Pumpsil, PureWeld XL, Bioprene and Marprene are trademarks of Watson-Marlow Limited. Disclaimer: The information contained in this document is believed to be correct but Watson-Marlow Limited accepts no liability for any errors it contains, and reserves the right to alter specifications without notice. GORE and STA-PURE are trademarks of W. L. Gore & Associates. Please state the product code when ordering pumps and tubing.



wmfts.com/global  
13 October 2025