

Bredel Heavy Duty 100

Bredel

Hose Pumps

Bredel Heavy Duty pumps

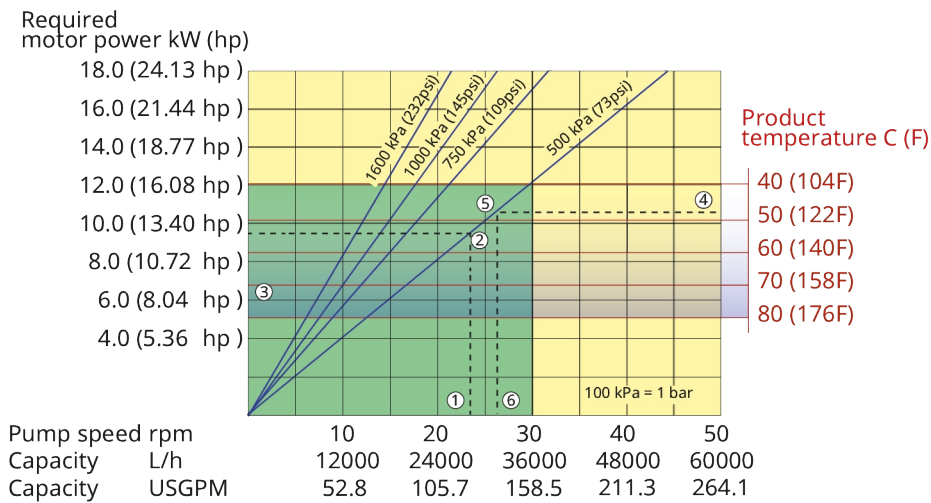
Features and benefits

- Heavy duty frame: designed for safer pump transportation, using a forklift truck
- Heavy duty bearings: provide improved lifetime when pumping high-solid content slurries
- Window guard: extra protection for the inspection window
- Reinforced brackets: more robust design, less risk of lubricant leakage, easier maintenance
- C4H paint: enhanced durability in highly corrosive environments



Bredel Heavy Duty 100 performance

Bredel 100



Note: The area of continuous operation diminishes with increased product temperatures. For product temperatures >40C, the area of continuous operation reduces to the corresponding red temperature line.

1. Flow required indicates pump speed
2. Calculated discharge pressure
3. Net motor power required
4. Product temperature
5. Calculated discharge pressure
6. Maximum recommended pump speed

- Continuous duty
- Intermittent duty

* Maximum 3 hours operation followed by minimum 1 hour stop

Technical specifications

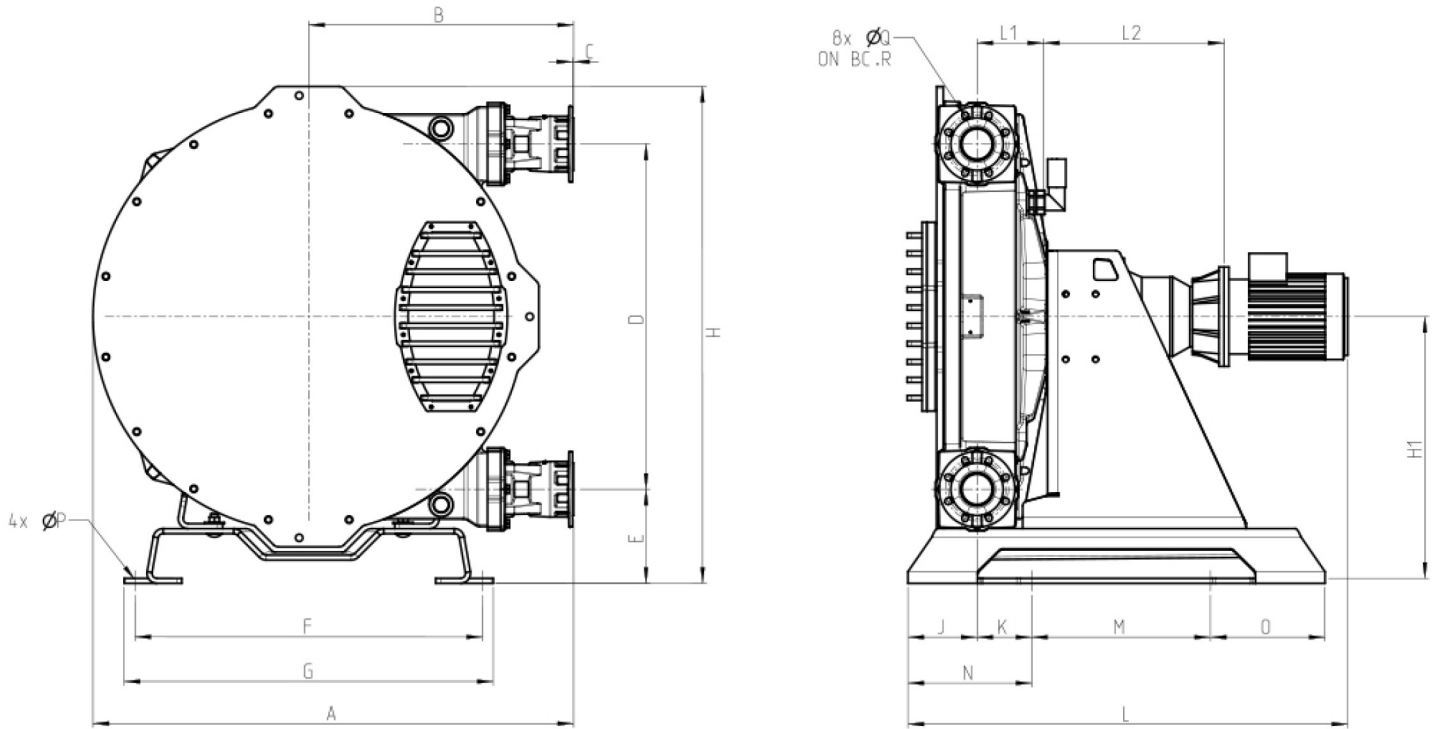
	Bredel Heavy Duty 100
Max. flow rate continuous	9499 USGPH (36000 L/h)
Max. flow rate intermittent	15831 USGPH (60000 L/h)
Volume per revolution	5.28 USG (20 l)
Max. continuous operating speed	30 rpm
Max. intermittent operating speed	50 rpm
Max. operating pressure	232 psi (16 bar)
Max. inlet pressure	23 psi abs (1.5 bar abs)
Max. suction capability	276 inWC (7 mWC)
Suction capability (80% Flow rate)	197 inWC (5 mWC)
Operating temperature	-4 °F to 113 °F (-20 °C to 45 °C)
Fluid temperature	-4 °F to 176 °F (-20 °C to 80 °C)
Min. starting torque	27437 in.lbs (3100 N m)
Weight	3364 lbs (152 kg)
Heavy Duty bracket weight	25.1 kg
Heavy Duty bracket weight	55.3 lbs
Window guard weight	26.4 lbs (12 kg)
Hose lubricant required	15.85 USG (60 l)
Port configurations	Down, Left, Right, Up
Heavy Duty support frame weight	Heavy duty bearings or 3 std bearings
Compatible hose materials	CSM, EPDM, F-NBR, NBR, NBR for food, NR-Metering, NR-Transfer
Flange assembly type	ANSI, DIN, JIS

Please consult your Bredel representative for lower or higher temperature operation.
Allowable ambient temperature is based on pump capabilities and may be further limited by gearbox ambient capabilities.

Materials of construction

	Bredel Heavy Duty 100
Hose material	CSM, EPDM, F-NBR, NBR, NBR for food, NR Endurance, NR-Transfer
Housing	Cast iron, ISO12944 category C4H, ISO12944 category C4M, ISO12944 category C5M
Rotor assembly	Cast iron, ISO12944 category C4M
Cover assembly	Cast iron, ISO12944 category C4M
Brackets and fasteners	Cast iron, Galvanized steel, ISO12944 category C4M, Stainless steel 316
Support frame	Galvanized steel, ISO12944 category C4H, ISO12944 category C5M, Stainless steel 316
Coupling bush	Alloy steel
Seals	Neoprene, Nitrile, Thermoplastic polyurethane
	ISO12944 category C4H, Steel

Bredel Heavy Duty 100 dimensions



Type	A	B	C	D	E	F	G	H	H1	J	K	Lmax	L1	L2max	M	N	O	ØP	ØQ	R
Bredel 100 (mm)	1452	800	3	1042	284	1050	1115	1500	790	209	165	1450	200	489	540	374	346	22	18	180
Bredel 100 (inches)	57.2	31.5	0.12	41	11.2	41.3	43.9	59.1	31.1	8.2	6.5	57.1	7.9	19.3	21.3	14.7	13.6	0.9	0.71	7.1
Connector sizes	ANSI 150#											EN DIN				JIS				
Bredel 100	4"											100mm				100mm				

Disclaimer: The information contained in this document is believed to be correct at the time of publication, but Watson-Marlow Bredel BV accepts no liability for any error it contains, and reserves the right to alter specifications without prior notice. All mentioned values in this document are values under controlled circumstances at our test bed. Actual flow rates achieved may vary because of changes in temperature, viscosity, inlet and discharge pressures and/or system configuration. APEX, DuCoNite, Bioprene and Bredel are registered trademarks.



wmfts.com/global
22 August 2025