

Bredel Heavy Duty 80



Hose Pumps

Bredel Heavy Duty pumps

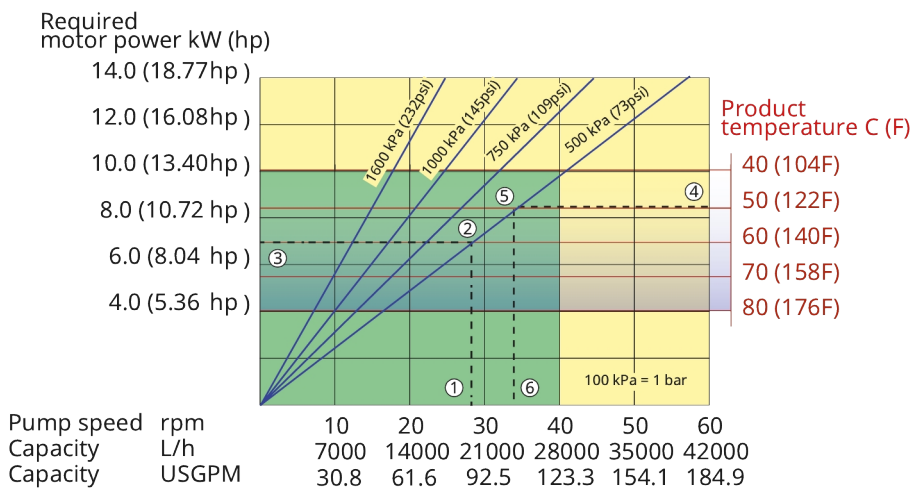
Features and benefits

- Heavy duty frame: designed for safer pump transportation, using a forklift truck
- Heavy duty bearings: provide improved lifetime when pumping high-solid content slurries
- Window guard: extra protection for the inspection window
- Reinforced brackets: more robust design, less risk of lubricant leakage, easier maintenance
- C4H paint: enhanced durability in highly corrosive environments



Bredel Heavy Duty 80 performance

Bredel 80



Note: The area of continuous operation diminishes with increased product temperatures. For product temperatures >40C, the area of continuous operation reduces to the corresponding red temperature line.

1. Flow required indicates pump speed
2. Calculated discharge pressure
3. Net motor power required
4. Product temperature
5. Calculated discharge pressure
6. Maximum recommended pump speed

- Continuous duty
- Intermittent duty

* Maximum 3 hours operation followed by minimum 1 hour stop

Technical specifications

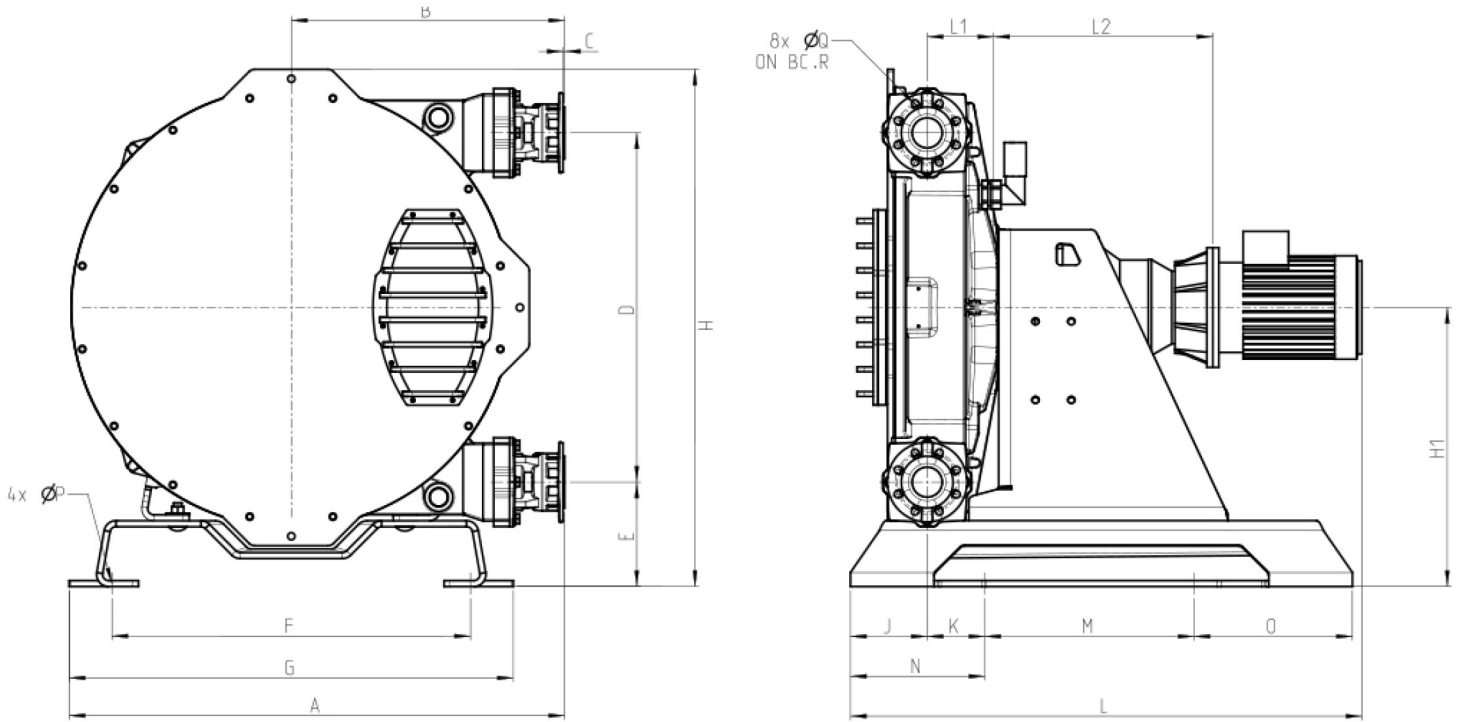
	Bredel Heavy Duty 80
Max. flow rate continuous	7409 USGPH (28080 L/h)
Max. flow rate intermittent	11113 USGPH (42120 L/h)
Volume per revolution	3.09 USG (11.7 l)
Max. continuous operating speed	40 rpm
Max. intermittent operating speed	60 rpm
Max. operating pressure	232 psi (16 bar)
Max. inlet pressure	23 psi abs (1.5 bar abs)
Max. suction capability	354 inWC (9 mWC)
Suction capability (80% Flow rate)	276 inWC (7 mWC)
Operating temperature	-4 °F to 113 °F (-20 °C to 45 °C)
Fluid temperature	-4 °F to 176 °F (-20 °C to 80 °C)
Min. starting torque	17701 in.lbs (2000 N m)
Weight	2516 lbs (1141 kg)
Heavy Duty bracket weight	15.3 kg
Heavy Duty bracket weight	33.7 lbs
Window guard weight	14.9 lbs (6.8 kg)
Heavy Duty support frame weight	640 lbs (290 kg)
Hose lubricant required	10.57 USG (40 l)
Port configurations	Down, Left, Right, Up
Heavy Duty support frame weight	Heavy duty bearings or 3 std bearings
Compatible hose materials	CSM, EPDM, F-NBR, NBR, NBR for food, NR-Metering, NR-Transfer
Flange assembly type	ANSI, DIN, JIS

Please consult your Bredel representative for lower or higher temperature operation.
Allowable ambient temperature is based on pump capabilities and may be further limited by gearbox ambient capabilities.

Materials of construction

	Bredel Heavy Duty 80
Hose material	CSM, EPDM, F-NBR, NBR, NBR for food, NR Endurance, NR-Transfer
Housing	Cast iron, ISO12944 category C4H, ISO12944 category C4M, ISO12944 category C5M
Rotor assembly	Cast iron, ISO12944 category C4M
Cover assembly	Cast iron, ISO12944 category C4M
Brackets and fasteners	Cast iron, Galvanized steel, ISO12944 category C4M, Stainless steel 316
Support frame	Galvanized steel, ISO12944 category C4H, ISO12944 category C5M, Stainless steel 316
Coupling bush	Alloy steel
Seals	Neoprene, Nitrile, Thermoplastic polyurethane
	ISO12944 category C4H, Steel

Bredel Heavy Duty 80 dimensions



Type	A	B	C	D	E	F	G	H	H1	J	K	Lmax	L1	L2max	M	N	O	ØP	ØQ	R
Bredel 80 (mm)	1244	686	4	876	262	900	1115	1298	700	193	145	1408	166	582	525	337	398	22	18	160
Bredel 80 (inches)	49.0	27.0	0.16	34.5	10.3	35.4	43.9	51.1	27.6	7.6	5.7	55.4	6.5	22.9	20.7	13.3	15.7	0.9	0.71	6.3
Connector sizes	ANSI 150#											EN DIN				JIS				
Bredel 80	3"											80mm				80mm				

Disclaimer: The information contained in this document is believed to be correct at the time of publication, but Watson-Marlow Bredel BV accepts no liability for any error it contains, and reserves the right to alter specifications without prior notice. All mentioned values in this document are values under controlled circumstances at our test bed. Actual flow rates achieved may vary because of changes in temperature, viscosity, inlet and discharge pressures and/or system configuration. APEX, DuCoNite, Bioprene and Bredel are registered trademarks.



wmfts.com/global
22 August 2025