

# Bredel Heavy Duty 65



Hose Pumps

Bredel Heavy Duty pumps

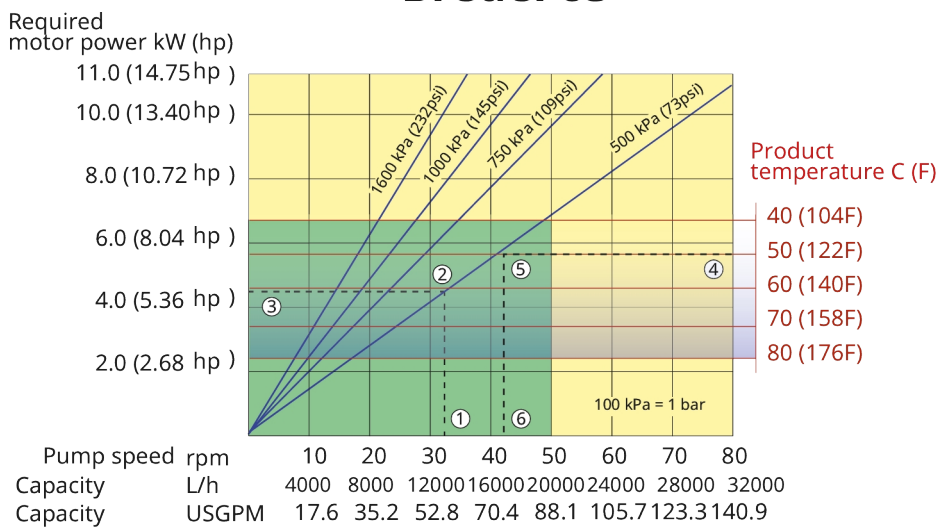
## Features and benefits

- Heavy duty frame: designed for safer pump transportation, using a forklift truck
- Heavy duty bearings: provide improved lifetime when pumping high-solid content slurries
- Window guard: extra protection for the inspection window
- Reinforced brackets: more robust design, less risk of lubricant leakage, easier maintenance
- C4H paint: enhanced durability in highly corrosive environments



## Bredel Heavy Duty 65 performance

### Bredel 65



Note: The area of continuous operation diminishes with increased product temperatures. For product temperatures >40C, the area of continuous operation reduces to the corresponding red temperature line.

1. Flow required indicates pump speed
2. Calculated discharge pressure
3. Net motor power required
4. Product temperature
5. Calculated discharge pressure
6. Maximum recommended pump speed

- Continuous duty
- Intermittent duty

\* Maximum 3 hours operation followed by minimum 1 hour stop

## Technical specifications

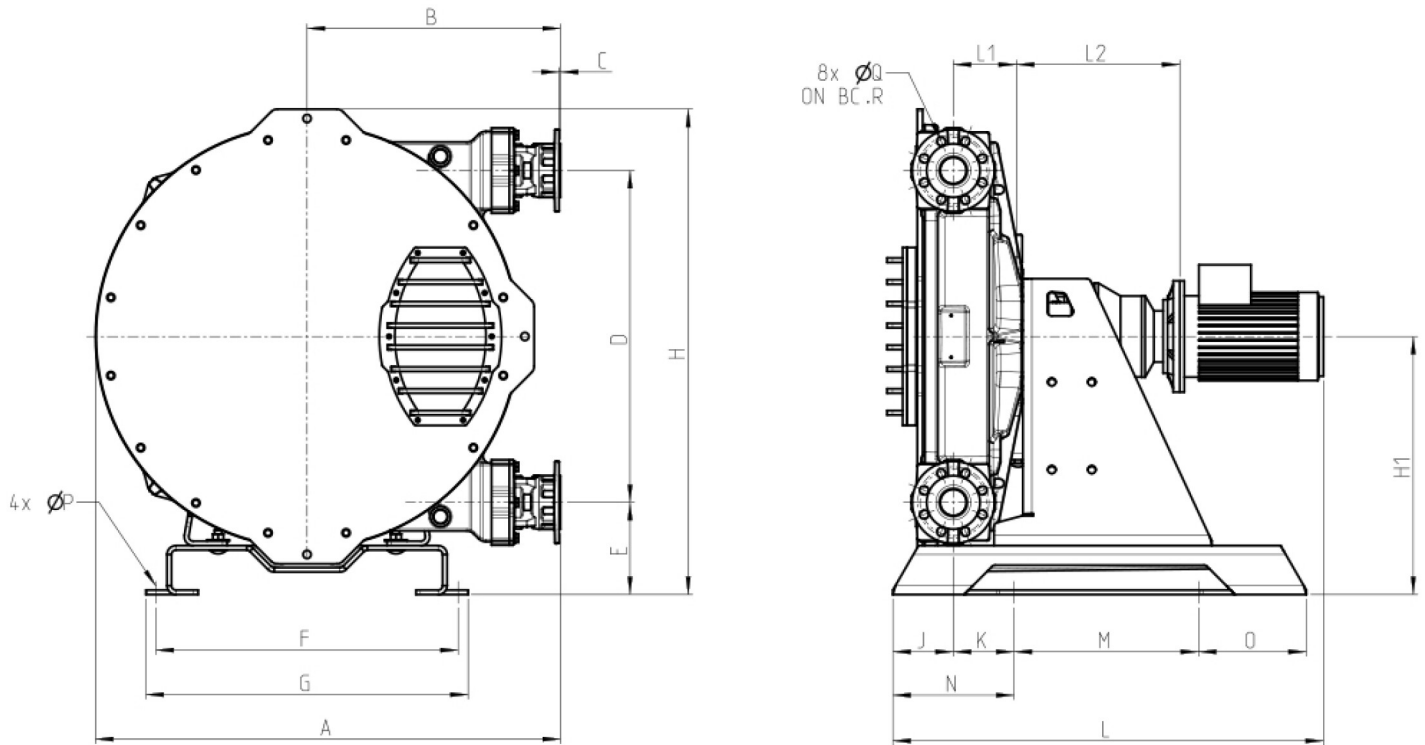
	<b>Bredel Heavy Duty 65</b>
Max. flow rate continuous	5303 USGPH (20100 L/h)
Max. flow rate intermittent	8485 USGPH (32160 L/h)
Volume per revolution	1.77 USG (6.7 l)
Max. continuous operating speed	50 rpm
Max. intermittent operating speed	80 rpm
Max. operating pressure	232 psi (16 bar)
Max. inlet pressure	30 psi abs (2 bar abs)
Max. suction capability	374 inWC (9.5 mWC)
Suction capability (80% Flow rate)	315 inWC ( 8 mWC)
Operating temperature	-4 °F to 113 °F (-20 °C to 45 °C)
Fluid temperature	-4 °F to 176 °F (-20 °C to 80 °C)
Min. starting torque	10178 in.lbs (1150 N m)
Weight	1411 lbs (640 kg)
Heavy Duty bracket weight	13.5 kg
Heavy Duty bracket weight	29.8 lbs
Window guard weight	11.3 lbs (5.1 kg)
Heavy Duty support frame weight	228 lbs (103 kg)
Hose lubricant required	5.28 USG (20 l)
Port configurations	Down, Left, Right, Up
Heavy Duty support frame weight	Heavy duty bearings or 3 std bearings
Compatible hose materials	CSM, EPDM, F-NBR, NBR, NBR for food, NR-Metering, NR-Transfer
Flange assembly type	ANSI, DIN, JIS

Please consult your Bredel representative for lower or higher temperature operation.  
Allowable ambient temperature is based on pump capabilities and may be further limited by gearbox ambient capabilities.

## Materials of construction

	<b>Bredel Heavy Duty 65</b>
Hose material	CSM, EPDM, F-NBR, NBR, NBR for food, NR Endurance, NR-Transfer
Housing	Cast iron, ISO12944 category C4H, ISO12944 category C4M, ISO12944 category C5M
Rotor assembly	Cast iron, ISO12944 category C4M
Cover assembly	Cast iron, ISO12944 category C4M
Brackets and fasteners	Cast iron, Galvanized steel, ISO12944 category C4M, Stainless steel 316
Support frame	Galvanized steel, ISO12944 category C4H, ISO12944 category C5M, Stainless steel 316
Coupling bush	Alloy steel
Seals	Neoprene, Nitrile, Thermoplastic polyurethane
	ISO12944 category C4H, Steel

## Bredel Heavy Duty 65 dimensions



Type	A	B	C	D	E	F	G	H	H1	J	K	Lmax	L1	L2max	M	N	O	ØP	ØQ	R
Bredel 65 (mm)	1046	570	3	746	207	680	725	1091	580	136	137	1204	141	486	415	273	243	18	18	145
Bredel 65 (inches)	41.2	22.4	0.12	29.4	8.1	26.8	28.5	43	22.8	5.4	5.4	47.4	5.6	19.1	16.3	10.7	9.6	0.71	0.71	5.7
<b>Connector sizes</b>	<b>ANSI 150#</b>												<b>EN DIN</b>				<b>JIS</b>			
Bredel 65	2.5"												65mm				65mm			

Disclaimer: The information contained in this document is believed to be correct at the time of publication, but Watson-Marlow Bredel BV accepts no liability for any error it contains, and reserves the right to alter specifications without prior notice. All mentioned values in this document are values under controlled circumstances at our test bed. Actual flow rates achieved may vary because of changes in temperature, viscosity, inlet and discharge pressures and/or system configuration. APEX, DuCoNite, Bioprene and Bredel are registered trademarks.



wmfts.com/global  
22 August 2025