

# Sample valves

## Sample valves

### Features and benefits

- Improved cleanability created by the angle of the fittings entering the valve body
- Excellent drainability created by the diamond shaped inside the valve chamber
- Allows closer jacketing to tank because fittings are angled away from vessel at a quicker rate
- Improved tank cleanability because the diaphragm seals on the ID at the vessel wall
- Unique ASEPCO port that allows through the chamber CIP/SIP, ensuring a truly representative sample every time
- Simple "Sample and Steam" valve body allows full steaming while valve is closed
- Simplifies maintenance to reduce downtime and the total cost of ownership
- Sampling that is truly representative of your process fluid



### Performance

Inlet OD Size (A)	Cv at 1 psi (0.07 bar)	
	GPM	LPM
inches		
Weld-in	1.23	4.66
1.50 Clamp style	1.23	4.66
2.00 Clamp style	1.23	4.66
3.00 Clamp style	1.23	4.66

The only thing that changes is the size of the tri-clamp inlet.

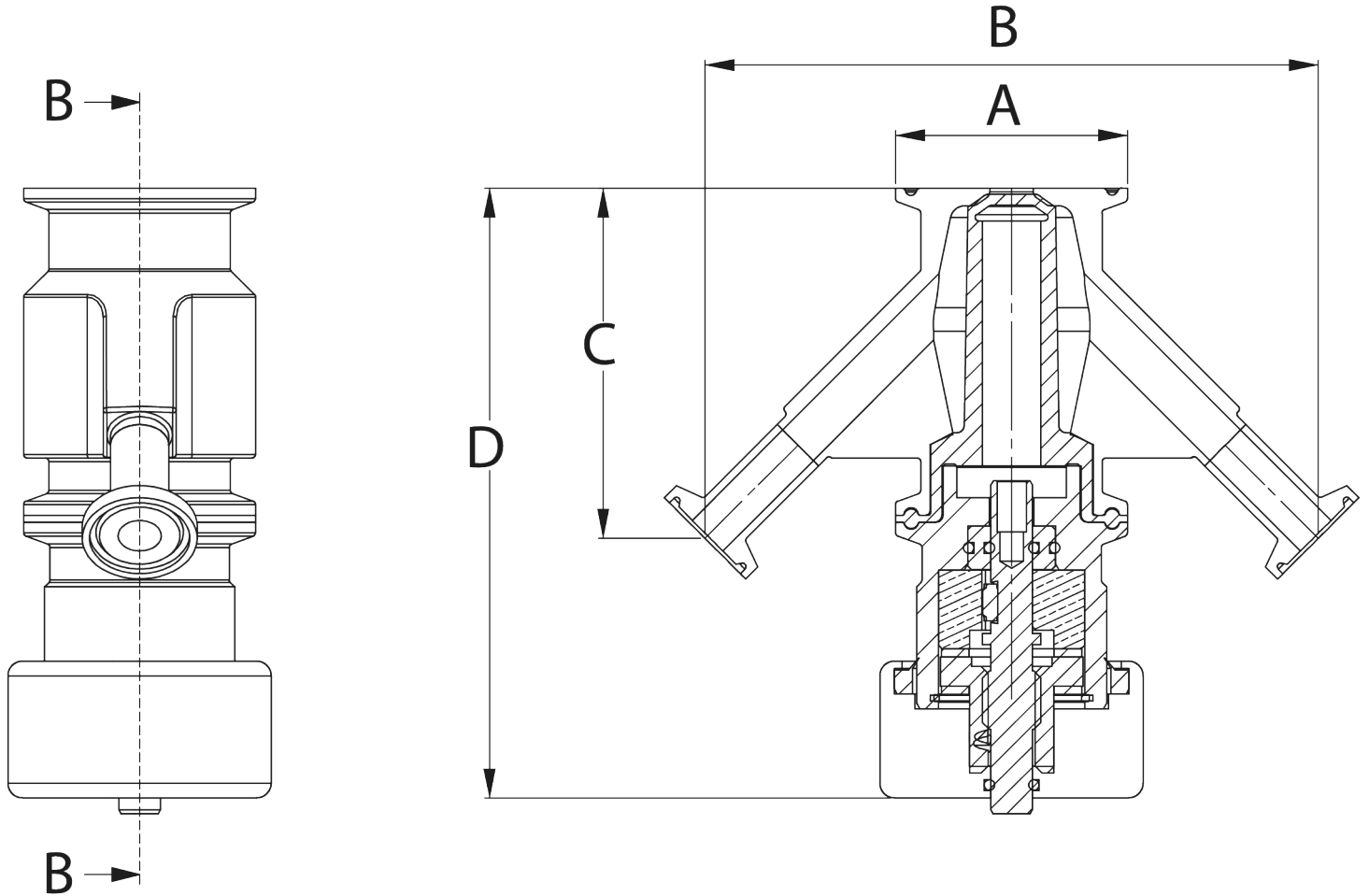
### Technical specifications

	Sample valves
Mounting type	Clamp, Weld-in
Flow rate	4.66 l/m
Flow rate	1.23 USGPM
Sizes	0.5", 1.5", 2.0", 3.0"
Inlet/outlet Connections	0.5" hygienic clamp, 0.5" tube end
Max. operating pressure	150 psi (10 bar)
Operating temperature	-60 °F to 500 °F (-51 °C to 260 °C)
Compatible actuators	Compact pneumatic, Manual
Compatible diaphragms	EPDM, PTFE, Silicone, Silicone plus, Viton
Surface finish options	Electropolished, Max 10 micro-inch Ra (0.25 µm Ra), Max 15 micro-inch Ra (0.375 µm Ra), Max 20 micro-inch Ra (0.5 µm Ra)
Certification and compliance	ISO 9001
Standards	ASME BPE, CE-PED
Weight	1.5 - 2.25 lbs (0.68 - 1.02 kg)

### Materials of construction

	Sample valves
Material	Hastelloy, Stainless steel 316L, Stainless steel AL-6XN

## Sample valves dimensions



Size	A		B		C		D - with Manual Actuator		D - with Pneumatic Actuator	
	in	mm	in	mm	in	mm	in	mm	in	mm
Weld-in	1.55	39.37	5.25	133.35	2.99	75.95	5.21	132.33	6.04	153.42
1.50 Clamp style	1.98	50.29	5.25	133.35	2.99	75.95	5.21	132.33	6.04	153.42
2.00 Clamp style	2.52	64.01	5.25	133.35	2.99	75.95	5.21	132.33	6.04	153.42
3.00 Clamp style	3.58	91.00	5.25	133.35	2.99	75.95	5.21	132.33	6.04	153.42

## Weights

Size	Valve Body		Total Weight with Manual Actuator		Total Weight with Pneumatic Actuator	
	kg	lb	kg	lb	kg	lb
Weld-in	0.68	1.50	1.95	4.30	1.82	4.00
1.50 Clamp style	0.79	1.75	1.93	4.25	2.06	4.55
2.00 Clamp style	0.91	2.00	2.04	4.50	2.18	4.80
3.00 Clamp style	1.02	2.25	2.15	4.75	2.27	5.00

Disclaimer: The information contained in this document is believed to be correct but ASEPCO accepts no liability for any errors it contains and reserves the right to alter specifications without notice. It is the users responsibility to ensure product suitability for use within their application. Radial diaphragm is a trademark of ASEPCO Corporation. Tri-Clamp is a registered trademark of Alfa Laval Corporate AB. A member of Watson-Marlow Fluid Technology Group, A Spirax-Sarco Engineering plc company.



wmfts.com/global  
13 October 2025