

Sample valves

Sample valves

Features and benefits

- Improved cleanability created by the angle of the fittings entering the valve body
- Excellent drainability created by the diamond shaped inside the valve chamber
- Allows closer jacketing to tank because fittings are angled away from vessel at a quicker rate
- Improved tank cleanability because the diaphragm seals on the ID at the vessel wall
- Unique ASEPCO port that allows through the chamber CIP/SIP, ensuring a truly representative sample every time
- Simple "Sample and Steam" valve body allows full steaming while valve is closed
- Simplifies maintenance to reduce downtime and the total cost of ownership
- Sampling that is truly representative of your process fluid



Inlet OD Size (A)	Cv at 1 psi (0.07 bar)	
	GPM	LPM
inches		
Weld-in	1.23	4.66
1.50 Clamp style	1.23	4.66
2.00 Clamp style	1.23	4.66
3.00 Clamp style	1.23	4.66

The only thing that changes is the size of the tri-clamp inlet.

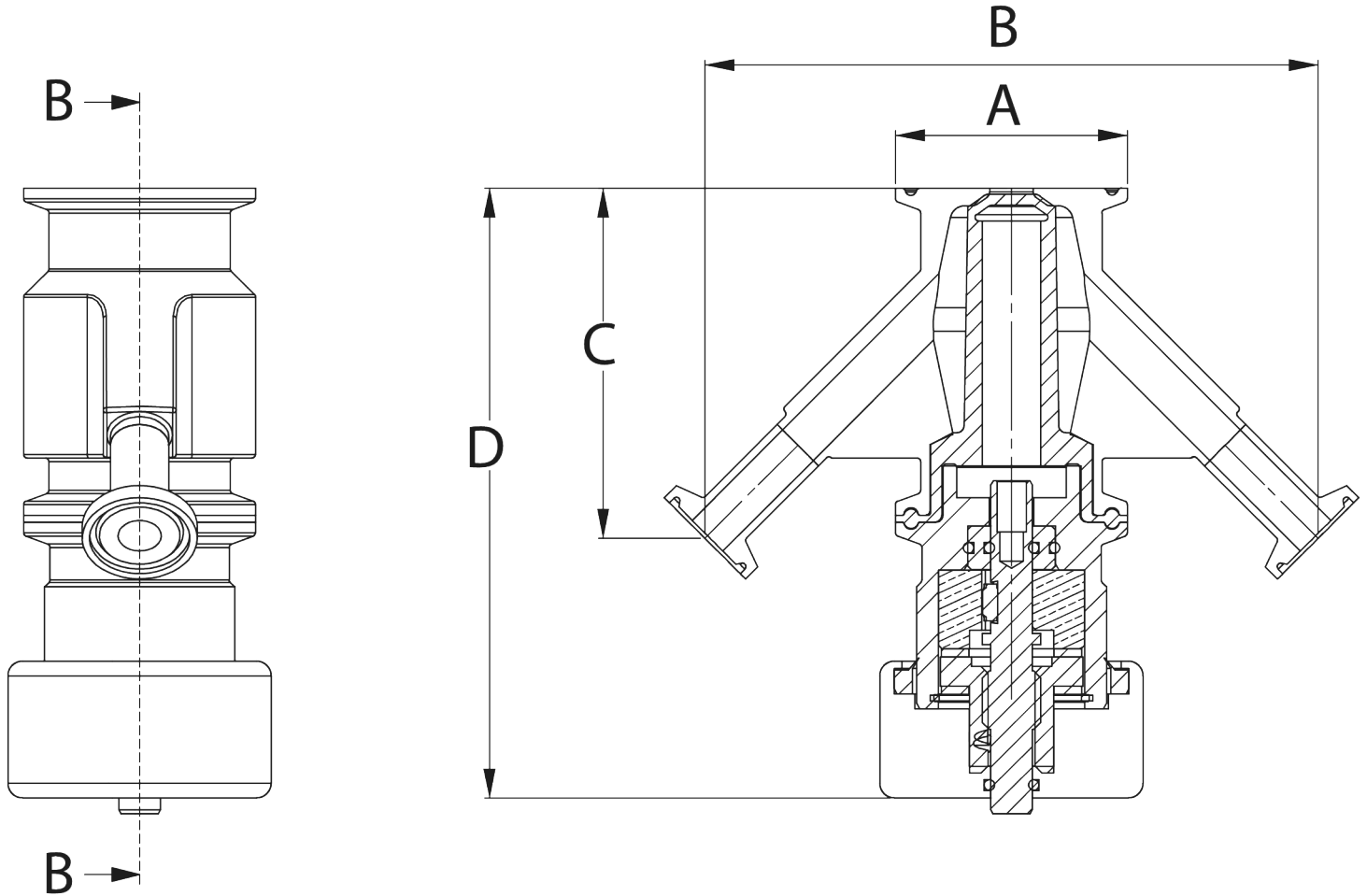
Technical specifications

	Sample valves
Mounting type	Clamp, Weld-in
Flow rate	4.66 l/m
Flow rate	1.23 USGPM
Sizes	0.5", 1.5", 2.0", 3.0"
Inlet/outlet Connections	0.5" hygienic clamp, 0.5" tube end
Max. operating pressure ranges	10 bar (150 psi)
Operating temperature ranges	-51 °C to 260 °C (-60 °F to 500 °F)
Compatible actuators	Compact pneumatic, Manual
Compatible diaphragms	EPDM, PTFE, Silicone, Silicone plus, Viton
Surface finish options	Electropolished, Max 10 micro-inch Ra (0.25 µm Ra), Max 15 micro-inch Ra (0.375 µm Ra), Max 20 micro-inch Ra (0.5 µm Ra)
Certification and compliance	ISO 9001
Standards	ASME BPE, CE-PED
Weight ranges	0.68 - 1.02 kg (1.5 - 2.25 lbs)

Materials of construction

	Sample valves
Material	Hastelloy, Stainless steel 316L, Stainless steel AL-6XN

Sample valves dimensions



Size	A		B		C		D - with Manual Actuator		D - with Pneumatic Actuator	
	inches	mm	inches	mm	inches	mm	inches	mm	inches	mm
Weld-in	1.55	39.37	5.25	133.35	2.99	75.95	5.21	132.33	6.04	153.42
1.50 Clamp style	1.98	50.29	5.25	133.35	2.99	75.95	5.21	132.33	6.04	153.42
2.00 Clamp style	2.52	64.01	5.25	133.35	2.99	75.95	5.21	132.33	6.04	153.42
3.00 Clamp style	3.58	91.00	5.25	133.35	2.99	75.95	5.21	132.33	6.04	153.42

Weights

Size	Valve Body		Total Weight with Manual Actuator		Total Weight with Pneumatic Actuator	
	kg	lb	kg	lb	kg	lb
Weld-in	0.68	1.50	1.95	4.30	1.82	4.00
1.50 Clamp style	0.79	1.75	1.93	4.25	2.06	4.55
2.00 Clamp style	0.91	2.00	2.04	4.50	2.18	4.80
3.00 Clamp style	1.02	2.25	2.15	4.75	2.27	5.00

Product codes

Size	Model number	Description
0.5	SC05-101-1	Radial valve 0.5" Sample 316L/EN 1.4435 1"/1.5" Clamp-end inlet 0.5" clamp-end outlet & 0.5" clamp-end port at 180 ° 20 micro-inch Ra surface finish electropolished and passivated includes body/actuator clamp
0.5	SC05-105-1	Radial valve 0.5" Sample EN 1.4435 body/EN1.4404 fittings 1" Clamp-end inlet 0.5" clamp-end outlet at 180 ° 20 micro-inch Ra surface finish Electropolished and passivated includes body/actuator clamp
0.5	SCA05-101-1	Radial valve 0.5" Sample AL6-XN 0.5" Clamp-end inlet 0.5" clamp-end outlet 20 micro-inch Ra surface finish electropolished and passivated includes body/actuator clamp
0.5	SCA05-105-1	Radial valve 0.5" Sample AL-6XN 0.5" Clamp-end inlet 0.5" clamp-end outlet 20 micro-inch Ra surface finish electropolished and passivated includes body/actuator clamp
0.5	SCH05-101-1	Radial valve 0.5" Sample C-276 /AL6-XN 1/1.5" Clamp-end inlet 0.5" clamp-end outlet & 0.5" clamp-end port at 180 ° 20 micro-inch Ra surface finish electropolished and passivated includes body/actuator clamp
0.5	SCX05-101-1	Radial valve , 0.5" Sample, 904L, Clamp-end inlet, 1.5" 0.5" clamp-end outlet, & 0.5" clamp-end port, at 180 °, 20 micro-inch Ra surface finish, electropolished and passivated includes body/actuator clamp
0.5	SVA05-104-1	Radial valve 0.5" Sample AL6-XN Clamp-end inlet 2" 0.5" clamp-end outlet (unground weld(s), weld is polished to match interior finish) 20 micro-inch Ra surface finish electropolished and passivated includes body/actuator clamp
0.5	SW05-101-1	Radial valve 0.5" Sample EN 1.4435 BODY/EN1.4404 FITTING Weld-end inlet 0.5" 0.5" clamp-end outlet & 0.5" clamp-end port at 180 ° (unground weld(s), weld is polished to match interior finish) 20 micro-inch Ra surface finish electropolished and passivated includes body/actuator clamp
0.5	SWA05-101-1	0.5" Sample Valve body, weld-inlet with 0.5" inlet flow, AL6XN, 0.5" straight clamp-end outlet (3.07 from centerline) at 45 ° angle opposite a 0.5" straight clamp-end port (3.07 from centerline) at 45 ° angle with body/actuator clamp, 20 micro inch Ra max., EP

Note: for additional configurations, please contact Watson-Marlow.

Disclaimer: The information contained in this document is believed to be correct but ASEPCO accepts no liability for any errors it contains and reserves the right to alter specifications without notice. It is the users responsibility to ensure product suitability for use within their application. Radial diaphragm is a trademark of ASEPCO Corporation. Tri-Clamp is a registered trademark of Alfa Laval Corporate AB. A member of Watson-Marlow Fluid Technology Solutions, A Spirax-Sarco Engineering plc company.



wmfts.com/global
13 October 2025