

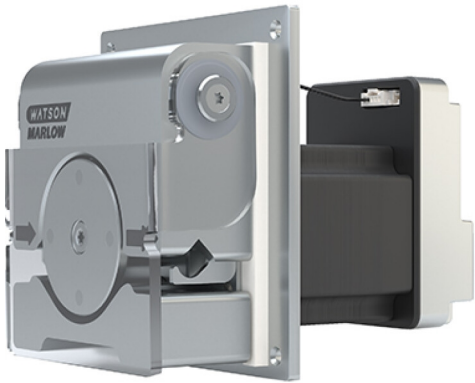
400 RXMD DriveSure ADC/En/Pn



400/RXMD series panel mount pumps

Features

- DriveSure panel mount pump for RXMD with standard or custom pressure settings
- 0.1 rpm to 550 rpm speed range at 0.1 rpm increments
- Watson-Marlow closed-loop control technology delivers consistent, cool and quiet performance
- EtherNet/IP™ and PROFINET® versions for digital network integration, control and monitoring
- ADC version with 4–20 mA, 0–10 V, 2–2000 Hz and fixed speed control options
- Integrated cover-open sensor and prime-switch input
- Downloadable PC software (WM Connect) to evaluate, optimise and diagnose via USB connection
- 12 V to 48 V DC supply voltage range to suit application requirements

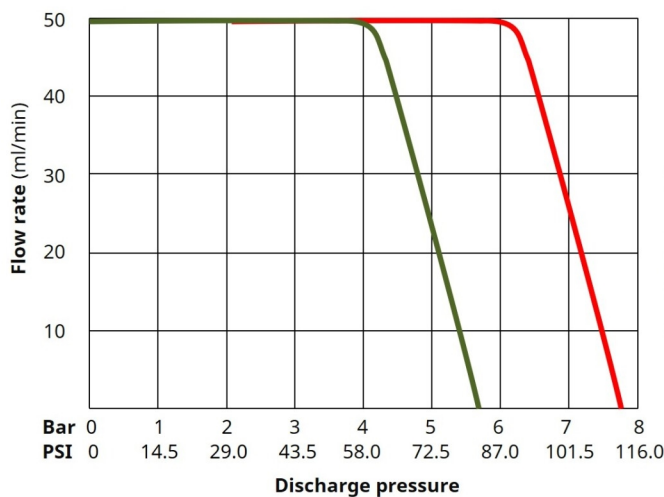


400 RXMD DriveSure ADC/En/Pn performance

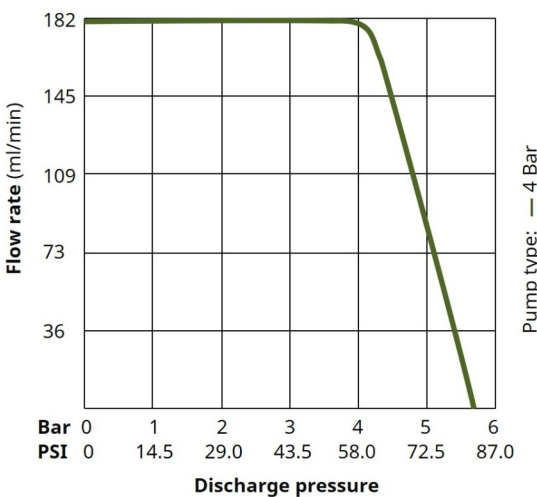
Flow Rate (mL/min) by tube bore based on 0.1 rpm (Min) to 550 rpm (Max)		
Tube bore (mm)	0.1 RPM	550 RPM
1.6	0.025 (mL/min)	137 (mL/min)
3.2	0.091 (mL/min)	500 (mL/min)

Performance data is based on a 48 V DC power supply, pumping water, with 0 bar inlet and discharge pressure. Actual performance is dependent on power supply voltage (DriveSure range 12 V to 48 V DC). For further information contact your local Watson-Marlow representative.

RXMD Pumphead, 1.6 mm Bore
Tygon E-3603, Water, 200 rpm



RXMD Pumphead, 3.2 mm Bore
Tygon E-3603, Water, 200 rpm



Technical specifications

	400 RXMD DriveSure ADC/En/Pn
Motor types	NEMA 24 stepper motor
Pumphead options	RXMD
Min. flow rate	0.025 ml/min
Max. flow rate	500 ml/min
Min. operating speed	0.1 rpm
Max. operating speed	550 rpm
Speed Resolution	0.1 rpm
Supply voltage	12 V to 48 V DC
Operating temperature range	5 °C to 40 °C
Operating temperature range	41 °F to 104 °F
Rated Power	75 W
Control options	0–10 V, 2–2000 Hz, 4–20 mA, EtherNet/IP™, Fixed speed, Prime speed, PROFINET®
Alarms	Cover-open, Hardware fault, Over current, Over temperature, Software fault, Speed, Stall, Under/over voltage
Outputs	Fault, Tacho
External Inputs	Prime switch
Weight	1.8 - 1.9 kg
Weight	3.968 - 4.189 lbs
Location	Indoor, Enclosure
Humidity	80 % up to 31 °C (88 °F), decreasing linearly to 50 % at 40 °C (104 °F)
Max. altitude	2000 m
Max. altitude	6561 ft
Standards	BS EN 55011-2016+A2-2021, BS EN IEC 61326-1-2021, CSA C22.2 No. 61010-1-12/AMD1:2018, EN 61010-1:2010/A1:2019, FCC 47CFR (Part 15), IEC 61010-1:2010/AMD1:2016, UL 61010-1:2012/R:2019-07
Certification	CB Certificate, EMC, NRTL certification
Compatible tubing bore size	1.6, 3.2 mm
Compatible tubing wall thickness	1.6 mm

Outputs are for ADC version only. Alarms are for EtherNet/IP™ & PROFINET® versions only.

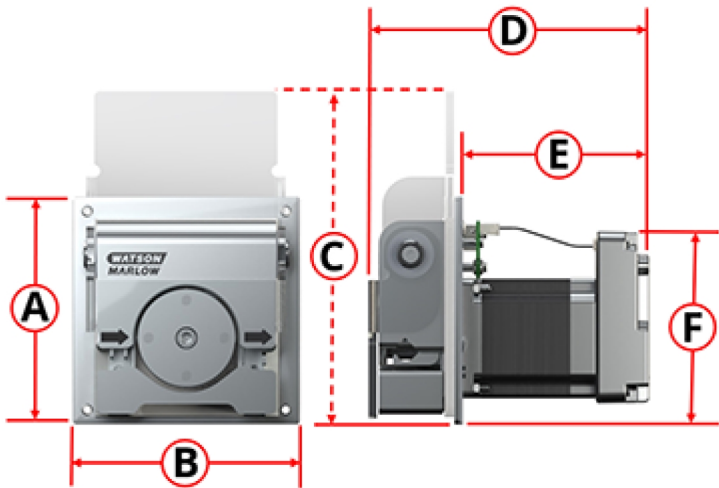
For detailed specifications of individual models refer to product reference manual or contact WMFTS representative.

Materials of construction

	400 RXMD DriveSure ADC/En/Pn
Pumphead body assembly	Acrylic glass, Anodised aluminium
Pumphead rotor assembly	Anodised aluminium, Stainless steel
Pumphead roller assembly	Stainless steel
Motor	Aluminium, Stainless steel
Controller Housing	ABS/PC, Aluminium
Mounting plate assembly	Anodised aluminium, EPDM, Stainless steel

Information listed covers the complete range. For detailed specifications of individual models/components refer to product reference manual or contact WMFTS representative.

400 RXMD DriveSure ADC/En/Pn dimensions



A		B		C		D		E		F	
mm	in	mm	in	mm	in	mm	in	mm	in	mm	in
114	4.49	114	4.49	167	6.57	142	5.39	96	3.78	97	3.82

Product codes



A	B	C	D	E
Control	Cable length	Direction	Max Pressure	Tube bore size
4 = ADC	1 = 1 m (3.28 ft) cable	1 = Clockwise (CW)	4 = 4 bar	3 = 1.6 mm
8 = En (EtherNet/IP)	3 = 3 m (9.84 ft) cable	2 = Counter clockwise (CCW)	6 = 6 bar	4 = 3.2 mm
9 = Pn (PROFINET)				

Accessories and Spares	
Product	Product code
DriveSure cable pack - 24 V power supply/USB-C - trials only*	009.24CP.DVS
DriveSure cable pack - 48 V power supply/USB-C - trials only*	009.48CP.DVS
1 m Power Cable DriveSure ADC/En/Pn	009.1PW.DVS
3 m Power Cable DriveSure ADC/En/Pn	009.3PW.DVS
1 m Control Cable DriveSure ADC	009.1CC.DVS
3 m Control Cable DriveSure ADC	009.3CC.DVS
Ethernet Cable, RJ45 to RJ45, CAT 5e SHIELDED, 3m	059.9123.000
PROFINET+ Cable, RJ45 to RJ45, CAT 5e SHIELDED, 3m	059.9128.000

*Cable packs do not include mains power lead. If required, order power leads suitable for your region.

Disclaimer: All flow rates shown were obtained pumping water at 20 °C (68 °F) with zero suction and delivery heads. Watson-Marlow, Pumpsil, PureWeld XL, Bioprene and Marprene are trademarks of Watson-Marlow Limited. The information contained in this document is believed to be correct but Watson-Marlow Limited accepts no liability for any errors it contains, and reserves the right to alter specifications without notice. GORE and STA-PURE are trademarks of W. L. Gore & Associates. Please state the product code when ordering pumps and tubing.

wmfts.com/global



28 March 2024