

BioClamp[®]

Sustainability Scorecard



Small footprint



0.32 kgCO₂e

cradle-to-gate carbon footprint

Efficient design



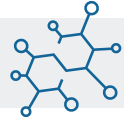
26%

less embodied CO₂e than our previous model

13%

lighter than our previous model

Materials



0%

recycled materials (pre-post)

0%

recyclable materials

0%

renewable materials

Due diligence



REACH* compliant

POPs* free

Improved circularity



>1%

production waste

98%

reduction in waste to our previous model

0

waste sent to landfill

Environmentally conscious manufacturing



100%

of our factories are on a green tariff

ISO14001 certified

>1 kg

CO₂e from production

Responsible packaging



70%

FSC* certified packaging materials



**WATSON
MARLOW**

*Registration, Evaluation, Authorisation and Restriction of Chemicals (REACH), Persistent Organic Pollutants (POPs), Forest Stewardship Council (FSC)